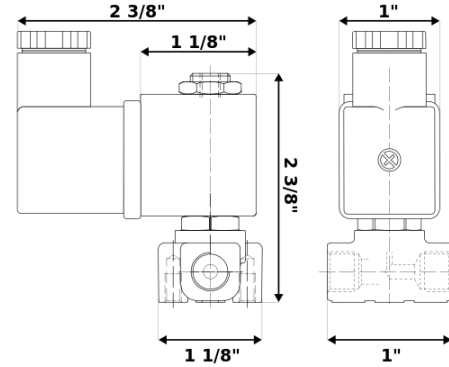


## N1L13-30V-B

Series J, normally closed, direct acting, 3-way solenoid valve with brass body and 1/8" connections



### Valve

Pipe size:	G 1/8" connections
Operating pressure:	0–215 psi
Flow coefficient:	0.07 Cv
Media temperature:	15–280 °F
Ambient temperature:	-5–140 °F
Suggested usage:	Air, inert gas, synthetic oils, water
Operation:	3-way, normally closed solenoid valve
Mechanism:	Direct acting
Manual override:	No
Pipe gender:	Female connections, male exhaust
Orifice size:	3/64" (1.2 mm), 1/16" (1.5 mm) exhaust
Design pressure:	580 psi
Media viscosity:	12 cSt

### Materials

Body:	Brass
Seal:	Fluoroelastomer rubber (FKM)
Orifice:	Brass
Core tube:	Stainless steel 300
Fixed core:	Stainless steel 400
Plunger:	Stainless steel 400
Spring:	Stainless steel 300
Shading ring:	Copper

### Electrical

Power:	120 V ac
Connection:	Cable gland (6–8 mm)
Holding:	10 VA
Inrush:	15 VA
Voltage tolerances:	+10% -15%
Coil inner diameter:	7/16"
Coil molding:	Polyethylene (PET)
Coil rating:	-5–355 °F (Class H)
Duty cycle:	Continuous, 100% ED
Enclosure:	NEMA 4, IP65

### Accessories

#### COIL/CONNECTOR

C-L13



- 120 V ac electrical coil
- Cable gland connector

See this part online:



[granzow.com](https://granzow.com)