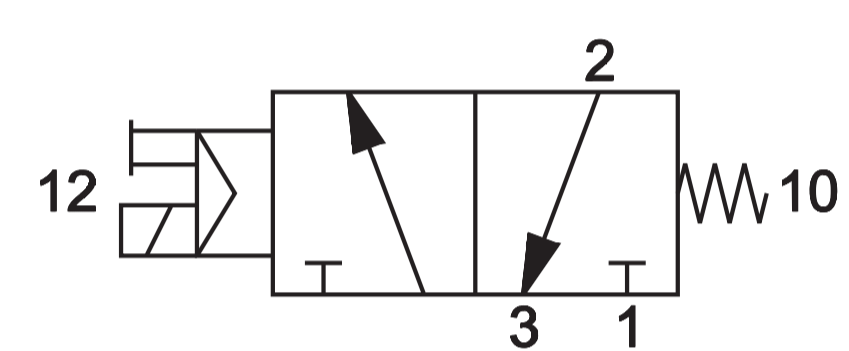


CHARACTERISTICS

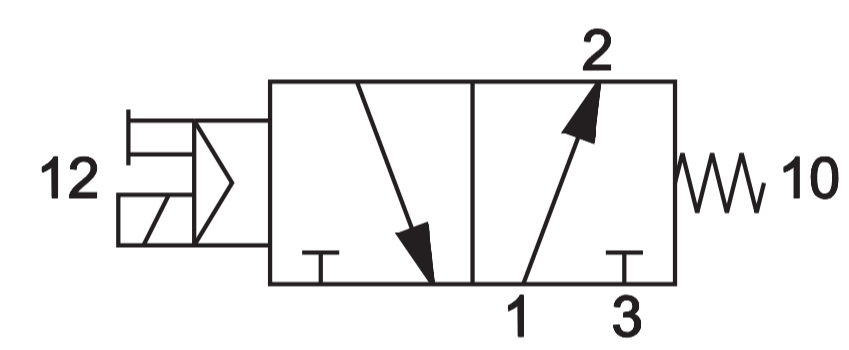
Ambient temperature	Max +50 °C						
Fluid	50 µm filtered air, with or without lubrication						
Commutation system	poppet						
Max pressure	10 bar						
Connections	G1/8	G1/4	G3/8	G1/2	G3/4	G1	G1 1/2
Nominal bore (mm)	5,5	8	10	15	19	25	39
Nominal flow rate (NI/min)	580	1100	1500	5400	6500	13500	35000
Valve body	zamak (G1/8 ÷ G1), aluminium (G1 1/2)						
Seals	polyurethane conical poppets and Vulkollan diaphragm						
Spool	aluminium (G1/8 ÷ G3/8), steel + plastic (G1/2 ÷ G1 1/2)						
	G1/8 ÷ G3/8			G1/4 ÷ G1 1/2			
Electropilot	U1			U2			
Coil	DA			DB			
Power consumption	3,5 W (DC) - 5 VA (AC)			11 W (DC) - 10 VA (AC)			
Connector	AM-5110			AM-5111			
Voltage	12 V DC - 24 V DC - 24 V AC - 110 V AC - 230 V AC						
Manual override	impulse screw - 2 positions						



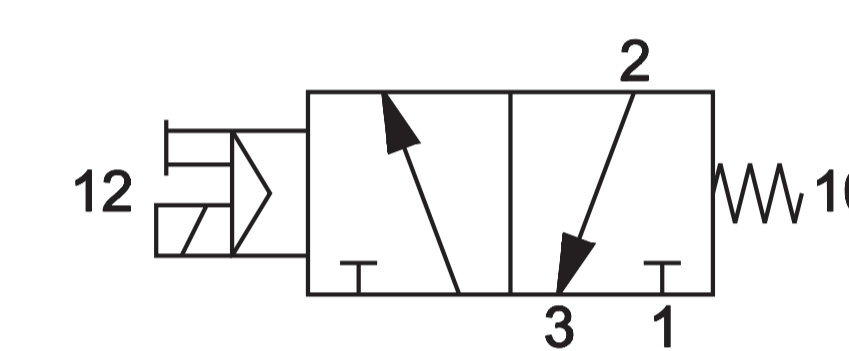
Solenoid valves G1/8 ÷ G3/8



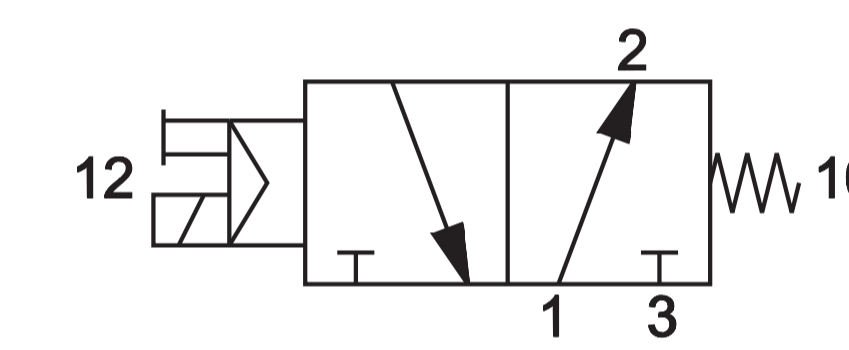
3/2 NC
AF-2500 G1/8 U1



3/2 NO
AF-2501 G1/8 U1

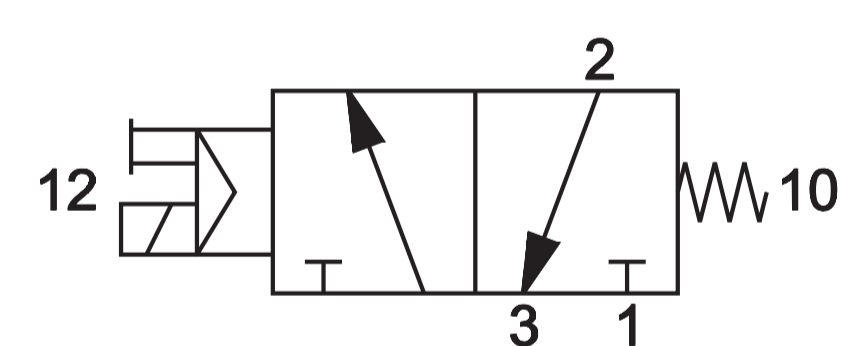


3/2 NC
AF-2510 G1/4 U1
AF-2517 G1/4 U2
AF-2520 G3/8 U1
AF-2524 G3/8 U2

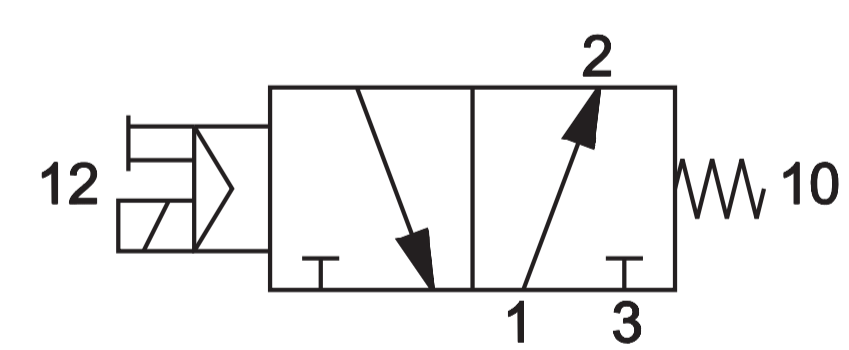


3/2 NO
AF-2511 G1/4 U1
AF-2518 G1/4 U2
AF-2521 G3/8 U1
AF-2525 G3/8 U2

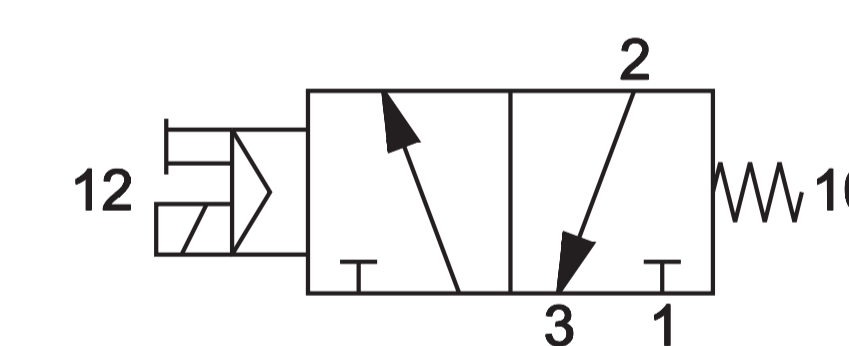
Solenoid valves G1/2 ÷ G1 1/2



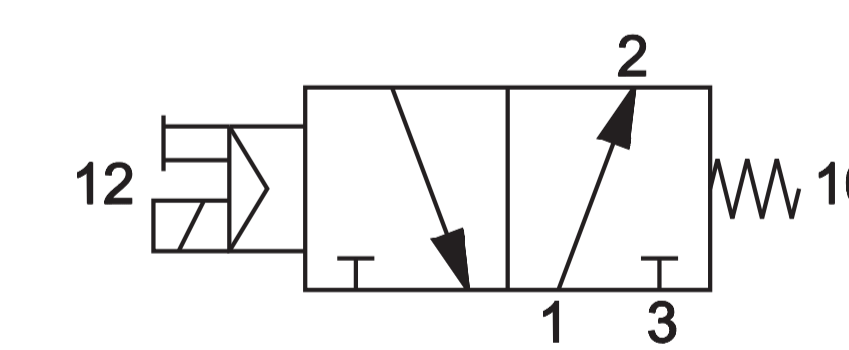
3/2 NC
AF-2530 G1/2 U2
AF-2540 G3/4 U2
AF-2545 G1 U2



3/2 NO
AF-2531 G1/2 U2
AF-2541 G3/4 U2
AF-2546 G1 U2

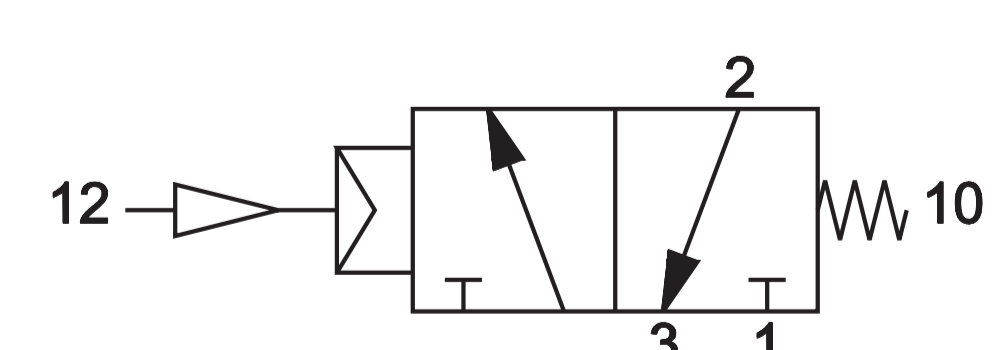


3/2 NC
AF-2565 G1 1/2 U2

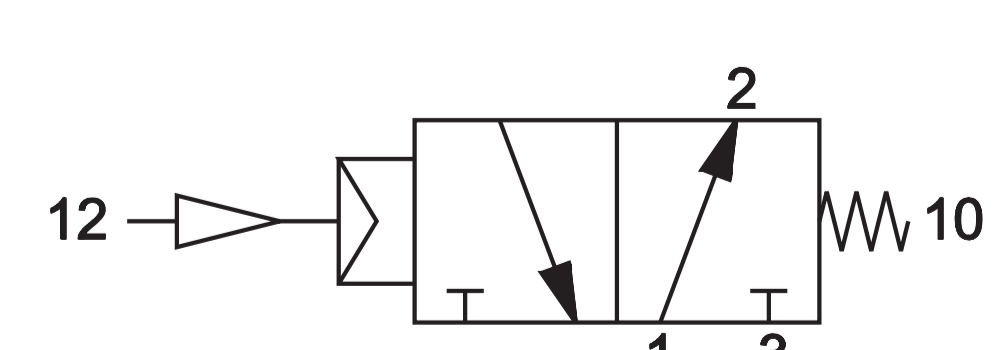


3/2 NO
AF-2561 G1 1/2 U2

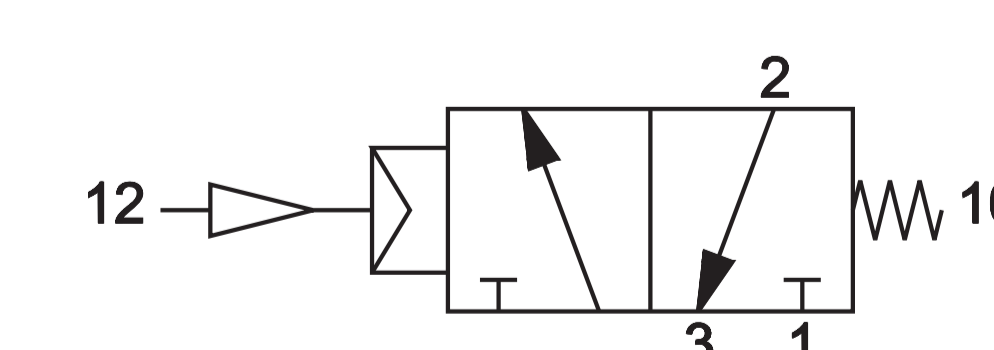
Pneumatic valves with external operation G1/8 ÷ G3/8



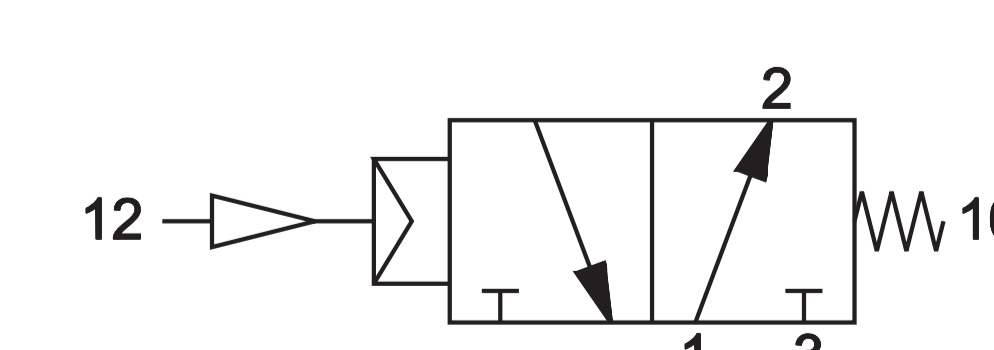
3/2 NC
AF-2600 G1/8



3/2 NO
AF-2700 G1/8



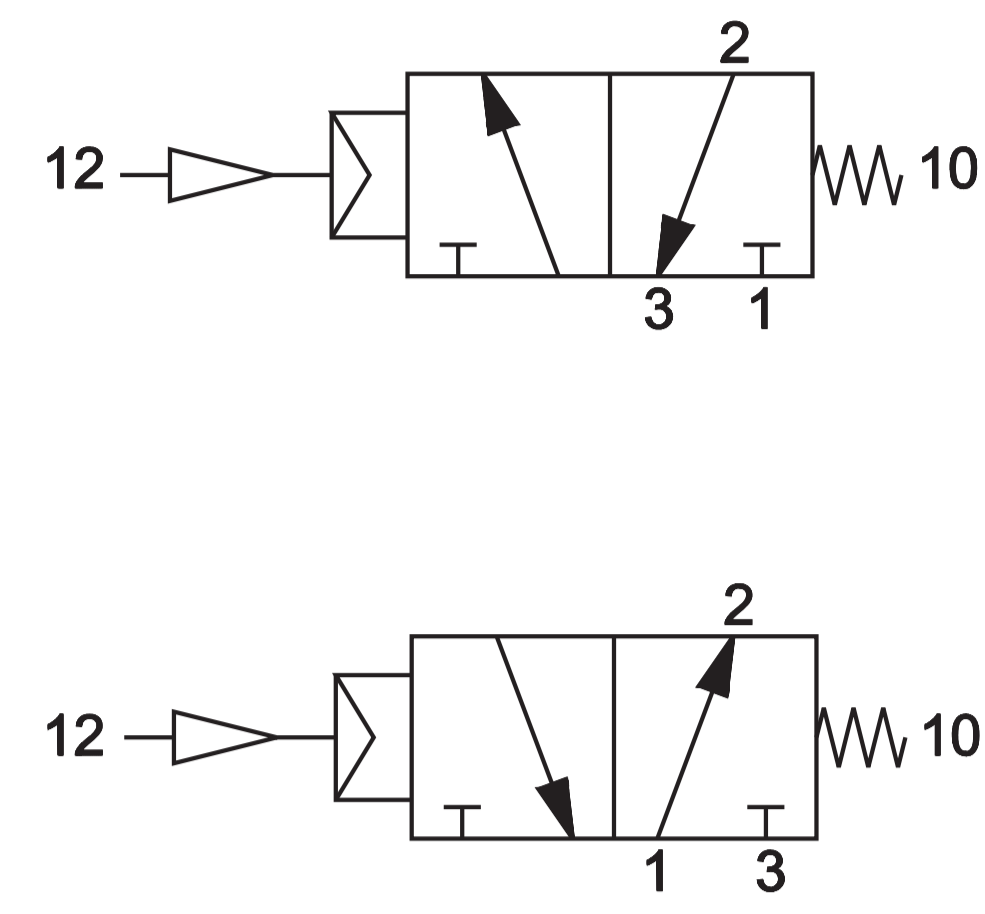
3/2 NC
AF-2601 G1/4
AF-2606 G3/8



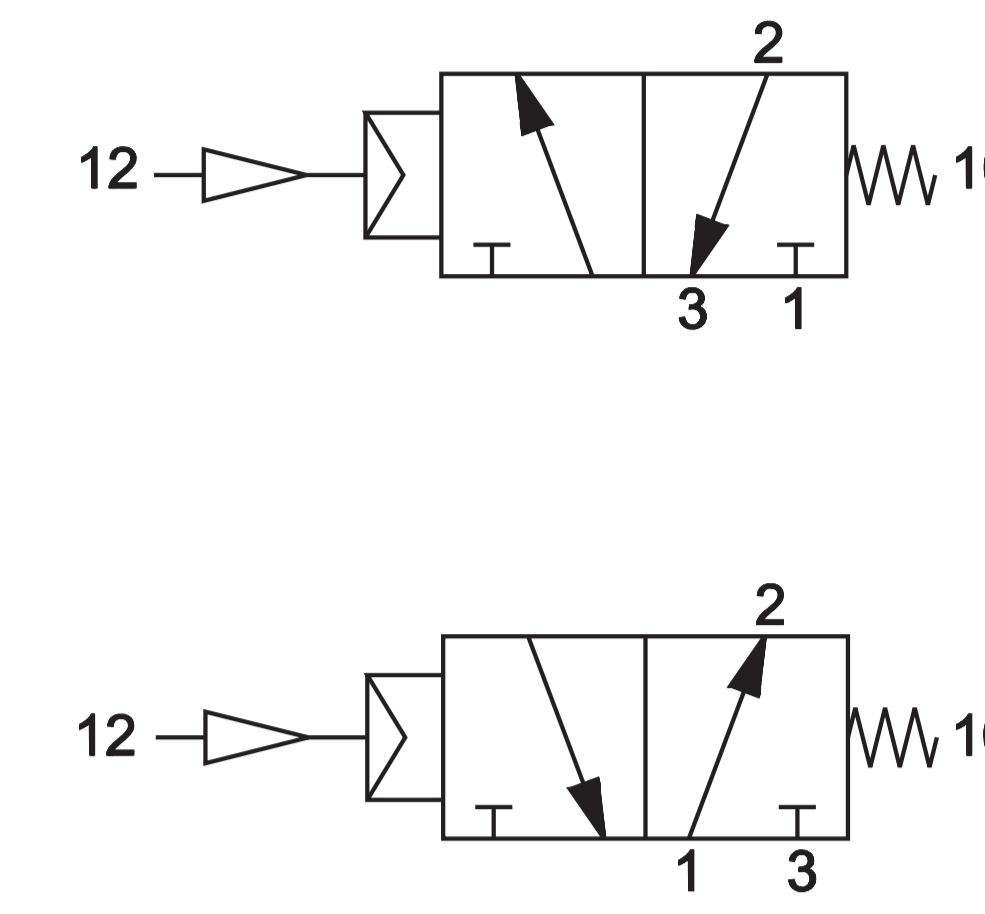
3/2 NO
AF-2701 G1/4
AF-2706 G3/8

Solenoid valves are supplied without coil/coil connector/locking nut

Pneumatic valves with external operation G1/2 ÷ G1 1/2

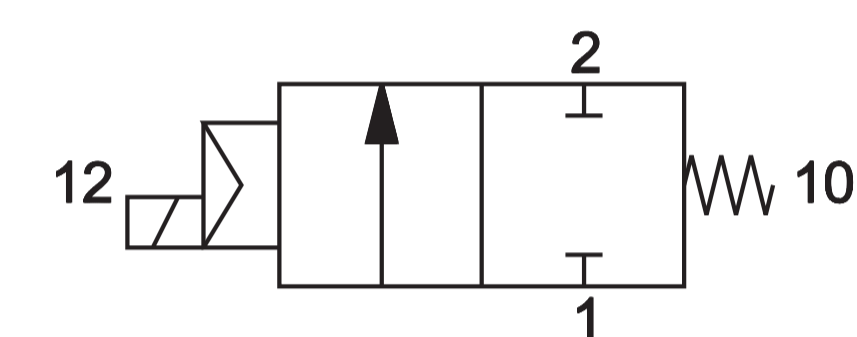


3/2 NC-NO
AF-2603 G1/2
AF-2610 G3/4
AF-2615 G1

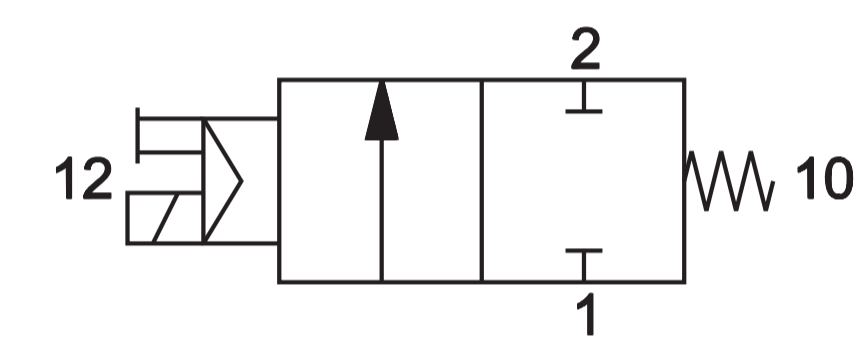


3/2 NC-NO
AF-2620 G1 1/2

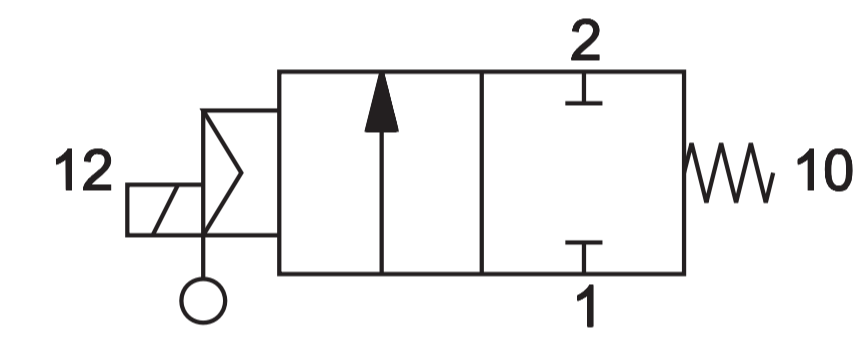
2/2 Solenoid valve for blowing G1



2/2 NC
AF-2550 G1

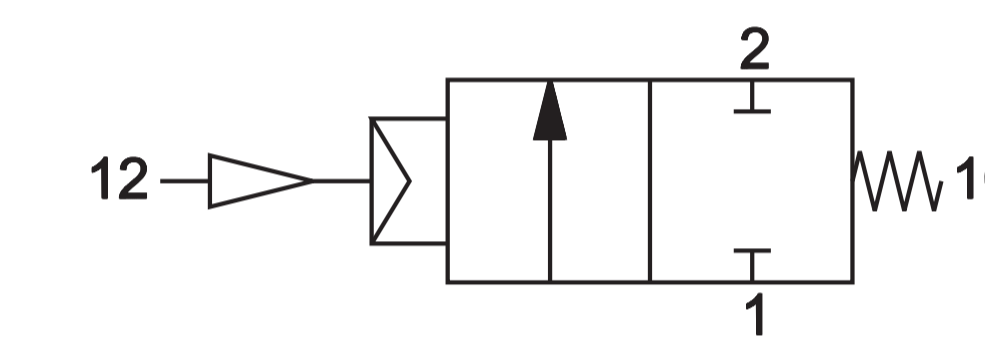


2/2 NC
AF-2551 G1



2/2 NC
AF-2552 G1

2/2 Pneumatic valve for blowing with ext. operation G1



2/2 NC
AF-2617 G1