

Model 8852

Trafag[®] Ex-Proof:
Ex. Pressure Transmitter

0...8700 psi
Measuring Range

Piezoresistive
Sensor

4...20 mA
Signal Output



ABOUT MODEL 8852 Trafag[®] Ex. Pressure Transmitter

Product Features

- NLH (BSL through 0): ± 0.1 % FS typ.
- Explosion-proof EEx ia IIC T3-T6 (EN 50014/20)
- Small pressure ranges (to 1.5 psi)
- Versions with frontal diaphragm
- Media temperature to 300°F
- EMC protection, IEC 61000
- Lightning protection available

Applications:

- Ship Applications
- Ex-Proof

Operating instructions for this Trafag[®] model are available on our web site at
<http://www.granzow.com/PDFs/X72227.pdf>

BESTELLINFORMATION / INFORMATION POUR LA COMMANDE / ORDERING INFORMATION

Lager Code (kurze Lieferzeit)/ **Numéro de stock** (délai de livraison bref)/ **Code for stock products** (short delivery time): **EXNA** (z.B./ Ex./ e.g: EXNA0.2A)

☛ siehe Katalog/ voir catalogue/ see catalogue: „Standard Products“

Varianten Code/ Codification de variantes/ Custom build code

Relativ/ Relatif/ Relative
Absolut/ Absolue/ Absolute

XXXX|XX|XX|XX|XX|XX|XX|XX...
8852
8853

Bereich	0 ... 0.1	Überdruck max.	3	Berstdruck max.	200	66
Plage	0 ... 0.16	Surcharge surpression	3	Pression destruction	200	67
Range	0 ... 0.2	Over pressure	3	Burst pressure	200	68
	0 ... 0.4		3		200	69
[bar]	0 ... 0.6	[bar]	3	[bar]	200	70
	0 ... 1.0		3		200	71
	0 ... 1.6		4.8		200	73
	0 ... 2.5		7.5		200	75
	0 ... 4.0		12		200	76
	0 ... 6.0		18		200	77
	0 ... 10		30		200	78
	0 ... 16		48		200	79
	0 ... 25		75		200	80
	0 ... 40		120		850	81
	0 ... 60		180		850	82
	0 ... 100		300		850	83
	0 ... 160		480		850	85
	0 ... 250		750		850	74
	0 ... 400		850		850	84
	0 ... 600		850		850	86

Sonderbereich nach Kundenwunsch, z.B.:

Plage à spécifier par le client, p. ex.:

-1... +4 bar, 0...5 bar, 0...12 bar

XX

Customized ranges on request, e.g.:

Sensor	Typ 05	(Genauigkeit NLH/ Précision NLH/ Accuracy NLH: ± 0.5 % FS)	P5
Capteur	Typ 02	(Genauigkeit NLH/ Précision NLH/ Accuracy NLH: ± 0.25 % FS)	P2
Sensor	Typ 01	(Genauigkeit NLH/ Précision NLH/ Accuracy NLH: ± 0.1 % FS)	P1
	Genauigkeit NLH / Précision NLH/ Accuracy NLH: siehe Tabelle/ voir table/ see table		

Druckanschluss	G 1/4"	innen/ femelle/ female	10
Raccord	G 1/4"	aussen/ mâle/ male	15
Pressure connection	G 1/4"	aussen/ mâle/ male	20
	G 1/2"	aussen/ mâle/ male	21
	G 1/2"	aussen/ mâle/ male	31
	G 1/2"	aussen/ mâle/ male	32
	G 1/2"	aussen/ mâle/ male	11
		Membrane: vorliegend/ frontal/ frontal	
		Membrane: frontbündig/ en face/ flush	
		DIN16288 (Manometer/ manomètre/ manometer)	

Ausführung	PUR Kabel/ Câble PUR/ PUR Cable:	Länge/ Longueur / Length [mm]	(IP67)	22
Exécution	Gerätestecker/ Embase mâle/ Male electrical plug	DIN43650 A (Mat.: PA)	(IP65)	04
Execution		Binder 723 (Mat.: Zn)	(IP67)	14
		MIL-C 26482 (Mat.: Al)	(IP40)	02

Ausgangssignal	4...20mA	19
Signal de sortie	4...20mA mit Blitzschutz/ avec protection de parafoudre / with lightning protection (Surge)	09
Output		

Zubehör	Kabeldose/ Fiche femelle/ Female electrical connector	DIN43650 A	58
Accessoires		Binder 723	37
Accessories		MIL-C-26485, 6-pol.	32
	Spez. Ölfüllung/ Remplissage d'huile special/ Special oil filling	Aseol	94
		Halocarbon	95
	Temperaturklasse/ Class de température/ Temperature class	T3	T3
		T4	T4
		T6	T6

SPEZIFIKATIONEN

SPÉCIFICATIONS

SPECIFICATIONS

HAUPTMERKMALE

Sensor: Piezoresistiv
Messbereich: 0...0.1 bis 0...600 bar
Ausgangssignal: 4...20 mA

CARACTÈRES DISTINCTIFS

Capteur: Piézorésistif
Plage de mesure: 0...0.1 à 0...600 bar
Signal de sortie: 4...20 mA

MAIN CHARACTERISTICS

Sensor: Piezoresistive
Measuring range: 0...0.1 to 0...600 bar
Signal output: 4...20 mA

GENAUIGKEIT

PRÉCISION

ACCURACY

Bereiche / Plage / Range	[bar]	0.1...0.5	0.5...2	2...25	25...600
Genauigkeit NLH ¹⁾ / Précision NLH ¹⁾ / Accuracy NLH ¹⁾ [± % FS]					
	P5	0.5	0.5	0.5	0.5
	P2	0.25	0.25	0.25	0.25
	P1		0.1	0.1	0.1
Temp.koeffizient/ Influence therm./ Temp. coefficient [± % FS/K]					
Nullpunkt/ Point zéro/ Zero point	0...70°C	0.06	0.03	0.015	0.015
	Option -25...85°C	0.08	0.04	0.02	0.02
Spanne/ Sensibilité/ Span	0...70°C	0.015	0.015	0.015	0.015
	Option -25...85°C	0.02	0.02	0.02	0.02
Langzeitdrift/ Dérive en longue durée/ Long term drift [1 Jahr]		< 4 mbar	< 4 mbar	< 0.2% FS	< 0.2% FS

¹⁾ BSL durch Null/ BSL par zéro/ BSL through zero

ELEKTRISCHE DATEN

Speisespannung
4...20mA: 10...30 VDC
Bürde
4...20 mA: $R_L \leq (U_s - 9V) / 20mA$
Reproduzierbarkeit: ±0.05% d.S.
Anstiegszeit: typ. 1 ms/ 10...90%
Nennndruck
Zenerbarriere: 30 VDC/ 100mA/ 1W

SPÉCIFICATIONS ÉLECTRIQUES

Tension d'alimentation
4...20mA: 10...30 VDC
Charge
4...20mA: $R_L \leq (U_s - 9V) / 20mA$
Reproductibilité: ±0.05% d.S.
Sensibilité de réponse: 1 ms/10...90% typ.
Pression nominale
Zenerbarrière: 30 VDC/ 100mA/ 1W

ELECTRICAL DATA

Supply voltage
4...20mA: 10...30 VDC
Load:
4...20mA: $R_L \leq (U_s - 9V) / 20mA$
Repeatability: ±0.05% d.S.
Rise time: typ. 1 ms/10...90%
Rated pressure 31 mA
Zenerbarrier: 30 VDC/ 100mA/ 1W

UMGEBUNGSBEDINGUNGEN

CONDITIONS D'ENVIRONNEMENT

ENVIRONMENTAL CONDITIONS

Temp.klasse/ Classe temp./ Temp. class	[°C]	T3	T4	T6
Betriebstemp./ Temp. de service/ Operating temp.	[°C]	-25...+85	-25...+85	-25...+55
Medientemp./ Temp. du fluide/ Media temp.	[°C]	-25...+150	-25...+100	-25...+55
Lagertemp./ Temp. de stockage/ Storage temp.	[°C]	-25...+85	-25...+85	-25...+55

Normen/ Normes/ Normes: EN 50014, EN 50020, EN 50284, EN 50281-1-1

Schutzart: ²⁾ min. IP65
Feuchtigkeit: max. 95% relativ
Vibration: 6g (25...2000 Hz)
Schock: 50g/ 1 ms

Protection: ²⁾ min. IP65
Humidité: 95% max. relatif
Vibration: 6g (25...2000 Hz)
Choc: 50g/ 1 ms

Protection: ²⁾ min. IP65
Humidity: max. 95% relative
Vibration: 6g (25...2000 Hz)
Shock: 50g/ 1 ms

EMV-SCHUTZ

Emission: IEC 61000-6-3
Immunität: IEC 61000-6-2

CEM PROTECTION

Emission: CEI 61000-6-3
Immunité: CEI 61000-6-2

EMC PROTECTION

Emission: IEC 61000-6-3
Immunity: IEC 61000-6-2

MECHANISCHE DATEN

Material
Sensor: 1.4435 (AISI316-L)
Gehäuse: 1.4435 (AISI316-L)
O-Ring (medienberührend): FKM 70°Sh
Gerätestecker: siehe Bestellinformationen
Anziehdrehmoment: 25 Nm
Gewicht: ~ 220 g

SPÉCIFICATIONS MÉCANIQUES

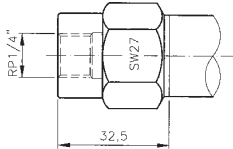
Matière
Capteur: 1.4435 (AISI316-L)
Boîtier: 1.4435 (AISI316-L)
O-Ring (contact. de médias): FKM 70°Sh
Embase mâle: voir information pour la commande
Couple de serrage: 25 Nm
Poids: ~ 220 g

MECHANICAL DATA

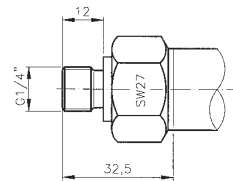
Material
Sensor: 1.4435 (AISI316-L)
Housing: 1.4435 (AISI316-L)
O-Ring (media contacting): FKM 70°Sh
Male electrical plug: see ordering information
Mounting torque: 25 Nm
Weight: ~ 220 g

²⁾ nur mit vorschriftsmässig montierter Kabeldose gültig/ valable seulement avec fiche femelle montée selon instructions/ provided female connector is mounted according to instructions

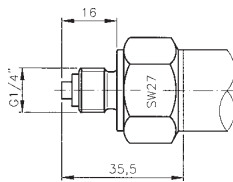
MASSBILDER & EL. ANSCHLUSS / COTES D'ENCOMBREMENT & RACCORDEM. ÉLECTR. / DIMENSIONS & EL. CONNECTION



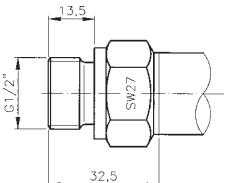
885X.XX.XX.10.XX.XX.XX...



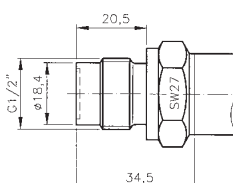
885X.XX.XX.15.XX.XX.XX...



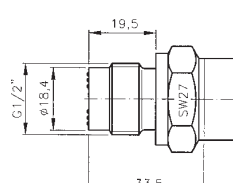
885X.XX.XX.20.XX.XX.XX...



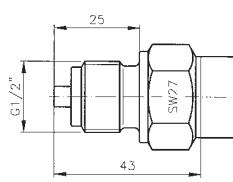
885X.XX.XX.21.XX.XX.XX...



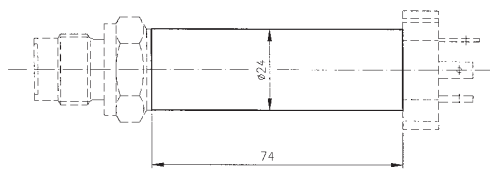
885X.XX.XX.31.XX.XX.XX...



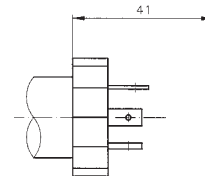
885X.XX.XX.32.XX.XX.XX...



885X.XX.XX.11.XX.XX.XX...

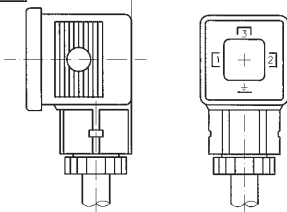


885X.XX.XX.XX.XX.XX.T4...
885X.XX.XX.XX.XX.XX.T6...

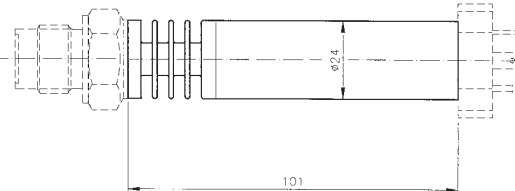


Pin 4...20mA

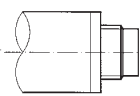
- 1 +Vin
- 2 Pout
- 3 ⚡



885X.XX.XX.XX.04.XX.58...

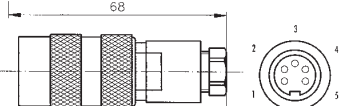


885X.XX.XX.XX.XX.XX.T3...

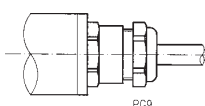


Pin 4...20mA

- 1 Pout
- 3 +Vin
- 5 ⚡



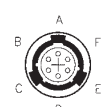
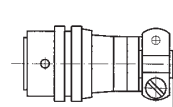
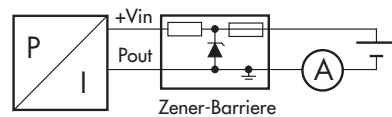
885X.XX.XX.XX.14.XX.37...



Farbe/ Couleur/ Color 4...20mA

- weiss/ blanc/ white +Vin
- gelb/ jaune/ yellow Pout
- braun/ brun/ brown ⚡

885X.XX.XX.XX.22.XX.XX...



Pin 4...20mA

- A +Vin
- C Pout
- F ⚡

885X.XX.XX.XX.02.XX.32...